

# SPECIFICATION

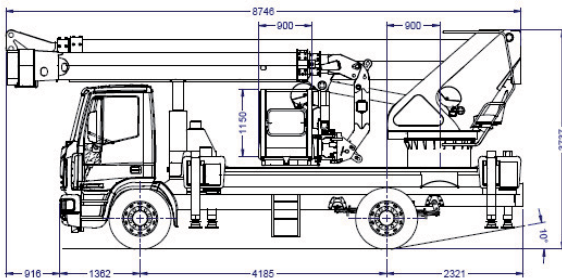
## B-LIFT 390 HR

- Telescopic boom (3 elements) (main boom + 2 extensions) • Extra long main jib with double extension and 180° swivelling angle • Secondary jib with 180° swivelling angle • Hydraulic and electric supply fitted on cable carrier chain inside main boom and jib • Automatic management system of secondary jib movements • 570° slewing turret on bearing turntable and gearmotor with negative hydraulic brake • Ground control station with remote umbilical cord controls • Turret and basket control stations with multifunction integrated colour display • Proportional electrohydraulic controls with simultaneous manoeuvres (ergonomic joysticks) • Vehicle cab anticollision devices • Automatic basket and boom centring device • Automatic steady tangential speed management system • Automatic return to transport position • Intercom communication device integrated on control station • Engine start/stop control from basket and ground • Hydraulically extendable aluminium basket • 90° Right + 90° Left hydraulic rotating basket • Electronic basket levelling • Basket load sensing device • Automatic working range delimitation (180°) with outriggers extended only on one side (left/right) • Working range with outriggers not extended (narrow jacking) • Auxiliary stand-by electro-hydraulic power pack, supplied by truck battery • Water or compressed air socket in the basket • 230 V AC CE Electric socket in the basket

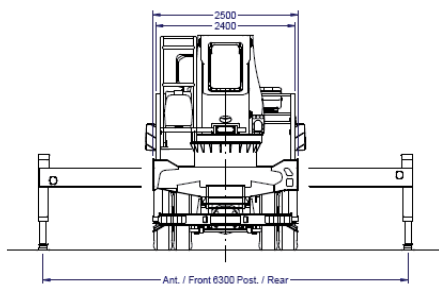
### PERFORMANCE

Working height	39 m	Capacity	120/280/450 kg
Platform height	37 m	Basket dim.	2400/3600 x900x1100 mm
Working outreach	26,3/23/20 m	GVW minimum	18 t

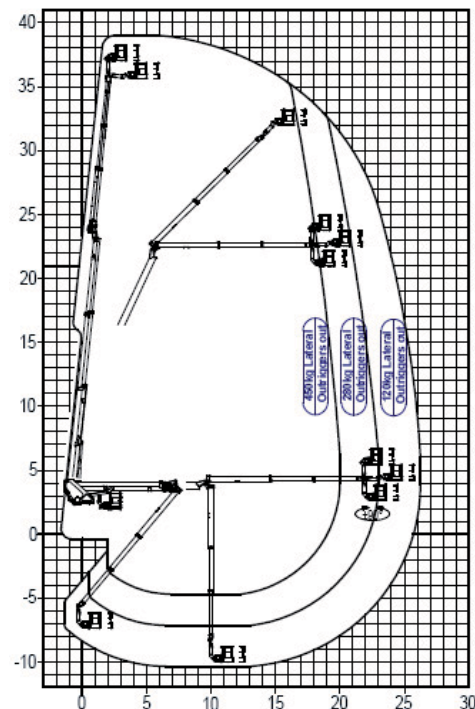
### DIMENSIONS



### OUTRIGGER FOOTPRINT



### WORKING ENVELOPE



Products specifications are subject to change without notice or obligation. Technical features and drawings in this brochure are for illustrative purposes only... B 390 HR - ed. 06/14

**CTE S.p.A.**

Headquarter and Factory - Rovereto (Tn): via Caproni, 7  
 Factory - Rivoli V.se (Vr): loc. Terramatta, 5

ph. +39 0464.48.50.50 - fax +39 0464.48.50.99  
 e-mail: [info@ctelift.com](mailto:info@ctelift.com)

CTE UK Ltd - Enderby Leicestershire - UK  
 CTE FRANCE Sas - Achères - France



Distributed by  
**madani utama**  
 Crane car rental & service  
[www.mobilcrane.co.id](http://www.mobilcrane.co.id)



[www.ctelift.com](http://www.ctelift.com)

